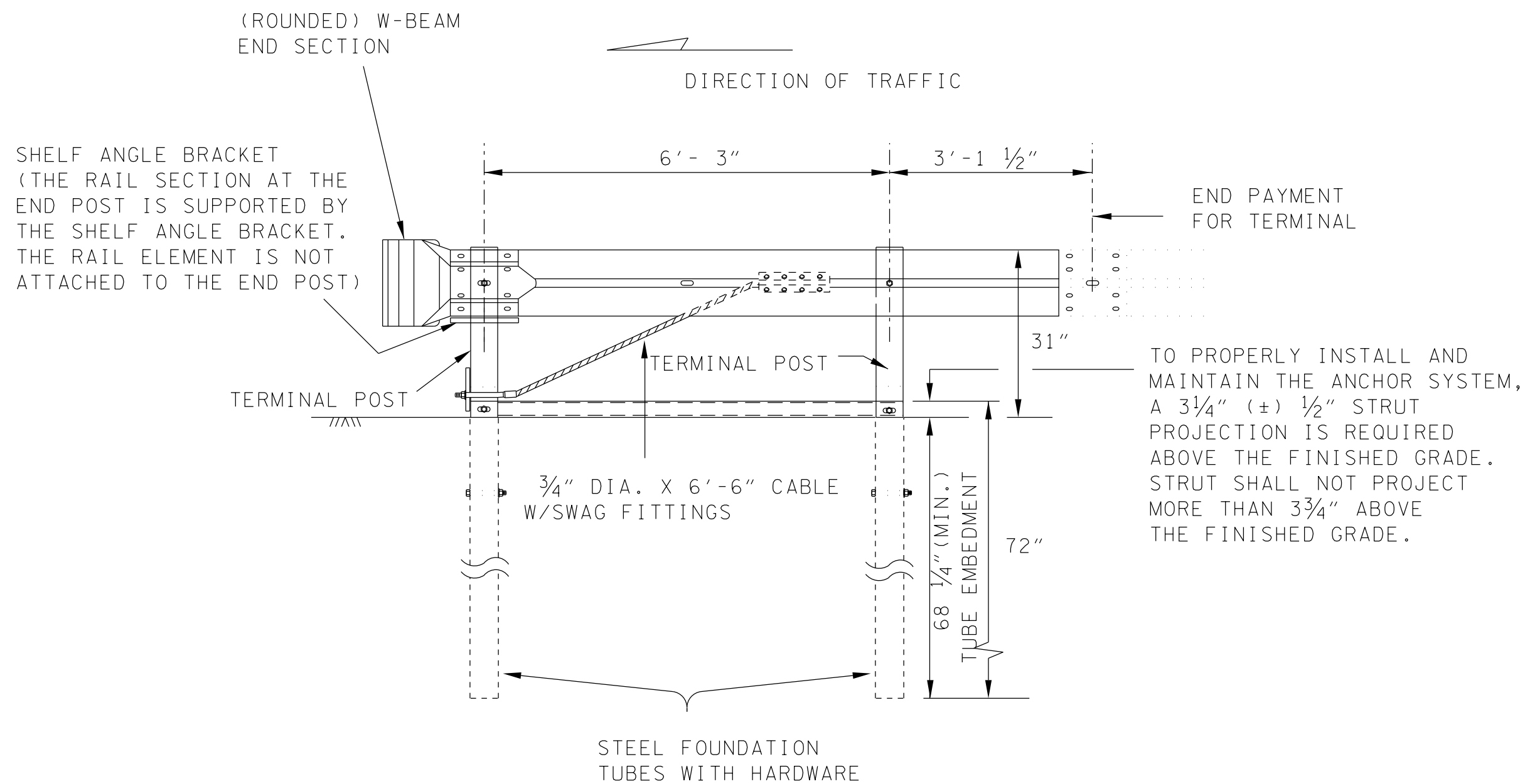
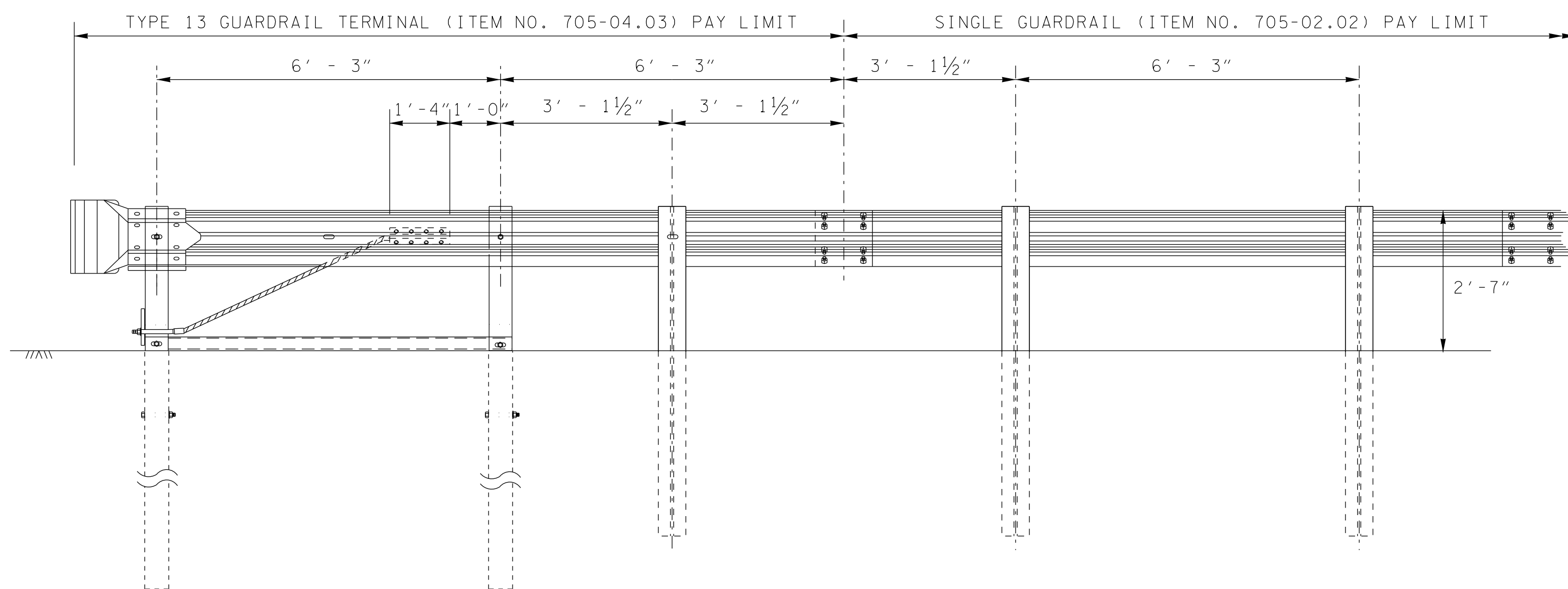


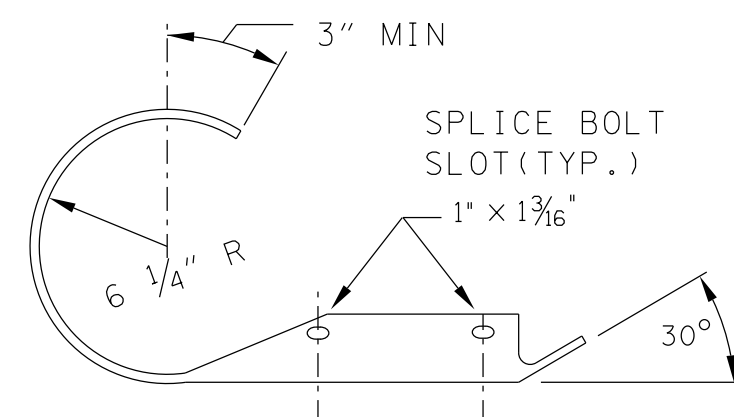
PLAN



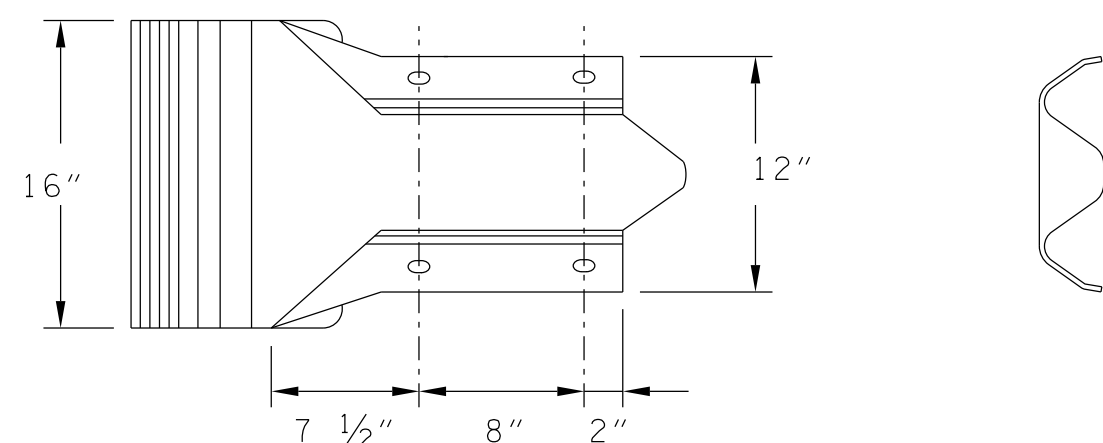
ELEVATION FROM FRONT OF GUARDRAIL



ALTERNATE INSTALLATION DETAIL

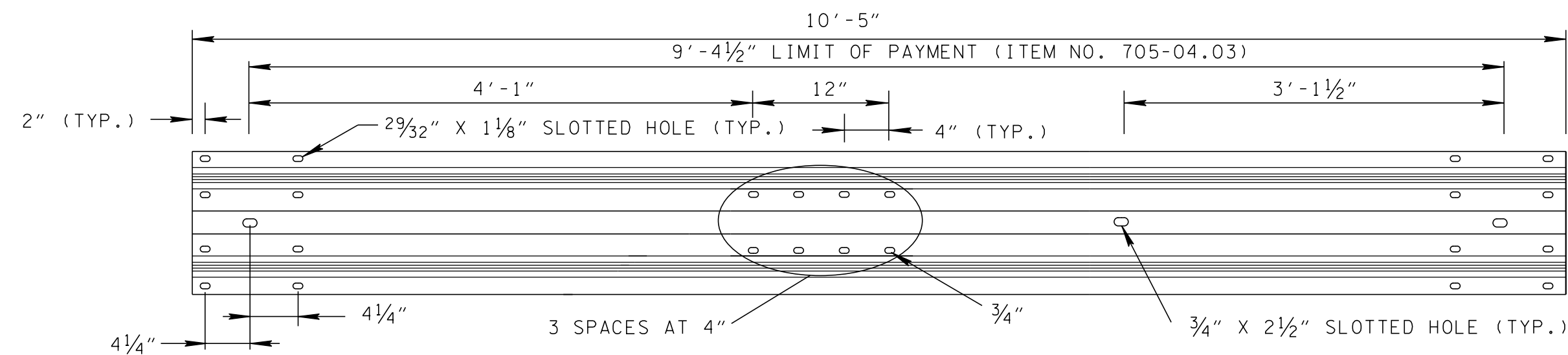


PLAN



ELEVATION

W-BEAM END SECTION (ROUNDED) (12 GA.)



TERMINAL RAIL ELEMENT DETAILS

NOTE TO DESIGNER

DO NOT USE WITHOUT ALSO REFERENCING S-GRA-3

GENERAL NOTES

- (A) THIS ANCHORAGE MAY ONLY BE USED ON THE TRAILING END OF A BARRIER WHICH IS NOT EXPOSED TO DIRECT VEHICULAR IMPACT OR OUTSIDE THE CLEAR ZONE (ONLY DIVIDED HIGHWAYS OR ROADS WITH ONE WAY TRAFFIC) USE S-PL-1 TO DETERMINE LENGTH OF NEED.
- (B) GUARDRAIL SHALL MEET THE REQUIREMENTS OF AASHTO M 180, CLASS A, TYPE 1 UNLESS OTHERWISE DESIGNATED.
- (C) PAY ITEM NO. 705-04.03 GUARDRAIL TERMINAL (TYPE13)

MINOR REVISION -- FHWA APPROVAL NOT REQUIRED.

STATE OF TENNESSEE  
DEPARTMENT OF TRANSPORTATION

TYPE 13  
GUARDRAIL  
TERMINAL  
(TRAILING END)

7-11-13

S-GRT-4

REV. 11-06-14: EXTENDED GUARDRAIL  
TERMINAL PAY LIMITS.

REV. 4-23-15: REVISED TERMINAL RAIL  
ELEMENT DETAILS. ADDED ALTERNATE  
DETAIL.

REV. 10-10-16: UPDATED DETAILS TO  
MATCH UPDATED S-GRA-3.